

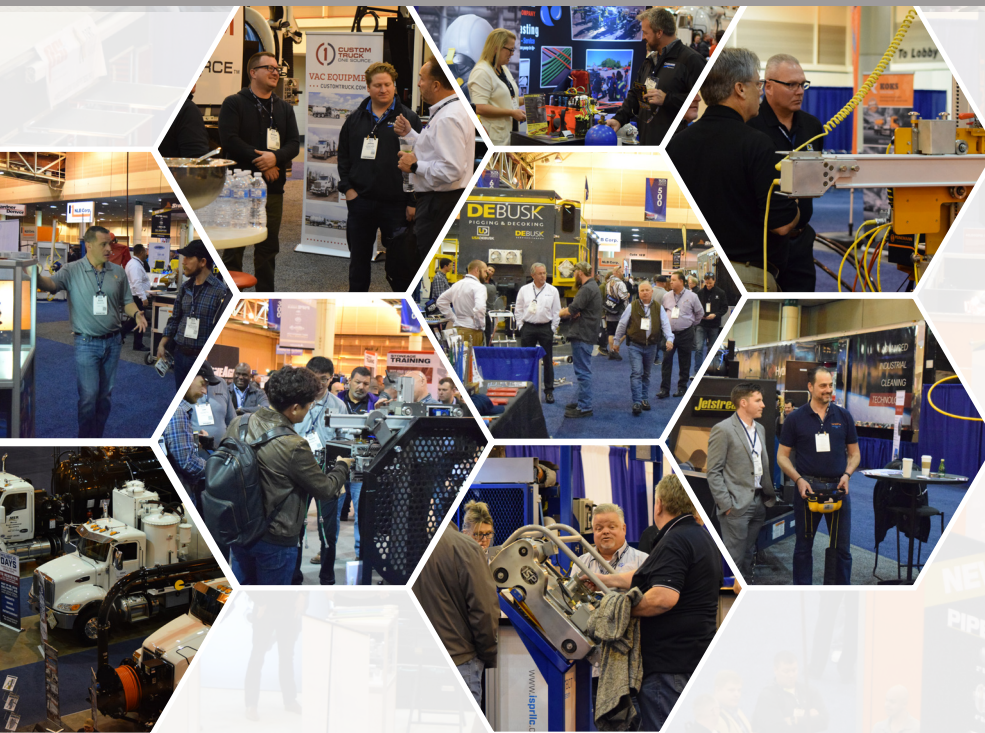
WJTA 2022

Conference & Expo

EXHIBITOR PROSPECTUS

November 2-3

Morial Convention Center New Orleans



www.WJTAExpo.com

Presented By:



Expo At-a-Glance

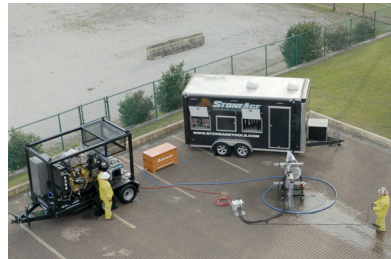
About WJTA Conference & Expo

The WJTA Conference & Expo is the annual tradeshow and biennial technical conference of the WaterJet Technology Association (WJTA), a globally recognized not-for-profit trade.

WJTA Conference & Expo provides a means for contractors, users, asset owners, suppliers, researchers, and other stakeholders to meet, share, and explore industry trends such as hands-free technology, safety best practices, fluid-jet applications, regulations and standards, and more.

The preliminary 2022 program includes educational sessions, onsite training, outdoor live equipment demonstrations, industry appreciation networking reception, conference white papers, and extensive exhibit hall with large equipment and hands-on displays.

First held as a standalone tradeshow in 2010, the 2022 Conference & Expo will mark WJTA's seventh show in New Orleans with enthusiasm from vendors and attendees following COVID-related cancellations in 2019 and 2020.



Primary Products/Industries Served

Contractors, Service Providers, Vendors, Rental,
Facility/Asset Owners, Public Works, Researchers,
Academics, Consultants

Industrial Cleaning
Environmental Services
Hydroblasting
Vacuum Truck/Air Mover
Waterjet/Cold Cutting
Vacuum/Hydro Excavation
Hydrodemolition
Sewer Cleaning, Maintenance and Inspection

Grow ▪ Connect ▪ Invigorate Your Brand at WJTA 2022

Conference & Expo Quick Facts

Numbers (3-year average)
29,000 ft² of exhibits
90 exhibiting companies
1,000+ participants

Geography
80% USA ▪ 20% All other countries
30+ countries represented

History

1983 ▪ First WJTA Conference
1989 ▪ First WJTA waterjet technology short course
1991 ▪ First live demos at the WJTA Conference
2010 ▪ First WJTA Expo in convention center
2014 ▪ Moved from Houston to New Orleans
2019-2020 ▪ COVID-related cancellations

Robotics, Automation and Controls
Safety/PPE
Staffing and Finance
Mechanical Cleaning
Bundle Pulling
Tank Cleaning
Waterjet/Blast Abrasives
Nozzles, Tools, Parts and Components
and much more...



Exhibitor Benefits

Included with your exhibit space:

Pre-Show

- Listing and hyperlink on Conference & Expo website and floorplan
- Customer invites
- Flyers, eblasts and promotional materials to spread the word about your booth
- Listing in August and October *Jet News* and pre-show Conference & Expo Guide

On-site

- Access to 1,000+ high-level industry professionals from around the world
- Five registrations for your company personnel per 100 sq. ft. of exhibit space – valid for all Conference & Expo activities and educational sessions
- One standard electrical outlet
- Complimentary open-access wifi

Post-show

- List of all verified attendees with contact information

Reach a focused, forward-looking audience of buyers



Exhibit Pricing*

Booth space	Before Feb. 1	After Feb. 1
1-2 booths	\$1,750/booth	\$2,000/booth
3+ booths	\$1,650/booth	\$1,900/booth

Island space	Before Feb. 1	After Feb. 1
0–499 sq.ft.	\$13.50/sq.ft.	\$15.50/sq.ft.
1,000–1,999 sq.ft.	\$12.50/sq.ft.	\$14.50/sq.ft.
2,000–2,999 sq.ft.	\$11.50/sq.ft.	\$13.50/sq.ft.
Over 3,000 sq.ft.	\$10.50/sq.ft.	\$12.50/sq.ft.



*Corporate Member pricing. Non-corporate members of WJTA pay an additional \$600 flat fee for any sized exhibit space. Exhibiting fees are refundable in full in the event of a show cancellation and refundable through August 1, 2022, for any company cancelling their space.

Exhibitor Show Rules

Space Assignment

Space assignment will be based on the order in which your application and deposit is received.

Provisions

The booth/exhibit space rental includes an 8' high draped backwall, 3' high draped sidewalls, a 7"x44" identification sign showing company name and booth number, and one (1) standard 500 watt electrical outlet. Additional electrical outlets and utilities will be available through the convention center, and additional furnishings will be available from Freeman, the official Conference & Expo services contractor.

Exhibitor Registration and Badges

Exhibitors must have an official WJTA badge to enter the exhibit area during regular exhibit hours. This badge will be available at registration. The registration area will be open during installation of exhibits starting at 7 a.m. Monday, October 31 through closing on Friday, November 4.

Exhibit Design

No exhibit will be permitted to interfere with a neighboring exhibit. This includes display material, loud noises, boisterous behavior or taped messages being played too loudly. Display fixtures, including equipment, should not block the sightline from the aisle to the adjoining booth.

Losses

Security is provided. However, WJTA is not responsible for loss or damage to exhibitor's property or lost shipments, either coming in, during or going out of the Expo hall.

Cancellation

Any company canceling after August 1, 2022, will forfeit the deposit on their exhibit space.

Promotional Events

Companies are encouraged to hold promotional events in conjunction with the WJTA Conference & Expo outside of show hours. No promotional events may be scheduled during show hours that could be in competition with official Expo activities without the prior approval of the WJTA Board of Directors. Types of promotional events may include, but are not limited to, receptions, sponsored networking activities, or product launches held away from the Conference & Expo facilities. Companies planning to hold events in conjunction with the Conference & Expo should contact the WJTA office to ensure they are not in conflict.

Shipping

Final shipping instructions and a schedule of charges will be available through Freeman's online. A link will be emailed to you when it is available and will be available through the WJTA Conference & Expo website. Exhibit materials may be shipped to arrive at Freeman's warehouse for storage prior to the show and delivery to the exhibit floor on the first day of show setup.

Installation of Exhibits

Companies may begin installing booths on Monday, October 31, from 12:00 p.m.–5:00 p.m. and on Tuesday, November 1, from 8:00 a.m.–5:00 p.m. All booths must be completely installed no later than 5:00 p.m. on Tuesday, November 1. Exhibits must be staffed at all times during exhibit hours. Opening and closing hours will be strictly adhered to.

Health, Safety and Hygiene

All participants must comply show rules and facility requirements with regards to safety, hygiene and infectious disease. Specific safety protocols will be communicated to attendees in advance of the event based on facility requirements, local regulations, federal guidelines and convention industry best practices. If you have questions or concerns, please contact the WJTA office at wjta@wjta.org.



WJTA 2022

 **November 2-3**

 **New Orleans**

 www.WJTAExpo.com

 **+1-314-241-1445**

 wjta@wjta.org